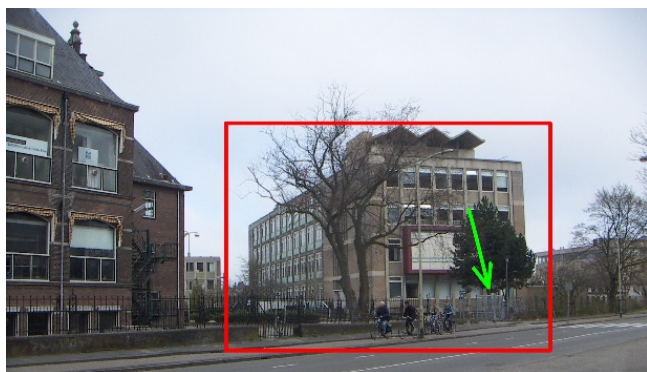


1 Go to A. Deusinglaan 2

The EEGlab is located in the basement of Antonius Deusinglaan 2, (9713 AW - Groningen, NL). Directions from your location to Antonius Deusinglaan 2 can be found using any online service providing route information (e.g., google, Live Search, or routnet). The Nic is hosted in the faculty of medicine at the University of Groningen (see figure 1(a)). The building is located at the opposite side of the entrance to the buildings of the faculty of medical sciences, which is the back-entrance to the university medical center Groningen.



(a) The building hosting the NIC



(b) Entrance to the building

Figure 1: The the red rectangle outlines the building hosting the NIC, whereas the green arrow indexes the gate to access the building. The red arrow points to the entrance to the building.

2 Find the door to the basement

Figure 1(b) shows the entrance to the building. When you have successfully found the door you will enter a hall (see figure 2(a)). The EEGlab can be reached descending the stairs, passing through the blue door outlined from the red rectangle. Please note that the access to this area is restricted, therefore you will not be able to enter if you do not have a pass. If you don't have a pass you can ring the bell (see figure 2(b)) which you can find at the side of the door, where the green arrow is pointing to.

3 Ring the door bell

As visible from Figure 2(b) the bell that you need to ring to gain access to the EEGlab is the second starting from the top.



(a) The hall of the lecture rooms of the Faculty of Medicine.



(b) Doorbells panel

Figure 2: The red rectangle outlines the door to the stair-case that brings to the basement where the EEGlab is sited. The green arrow points to the location of the bell. In the left figure the EEGlab's bell is outlined in red, and can be easily identified through the label at the right-side of the bell.

4 IMPORTANT!

There are specific cases when the access to the hall, or even the building to the Nic, are not possible. The front door of the building is closed from 17.00 o'clock (5 p.m.) to 8.00 o'clock (8 a.m.). If you haven't been instructed otherwise you can access the building calling the EEGlab at this number 050 363 8810. If someone is there waiting for you they will come to pick you up.

This is a portable document format of the webpage Way to the EEGlab Nic, for information p.toffanin@rug.nl